

SS COMMUNICATIONS



PRODUCT | SOLUTION | SERVICE

20 YEARS OF EXCELLENCE, PAGE BY PAGE



A WORLD OF ELECTRONIC SAFETY & SECURITY



CENTRAL OFFICE - 222 & 319 NAVJEEVAN COMPLEX, SINDHI
CAMP - STATION RD, JAIPUR , RAJASTHAN , 302006 **IND IA**

+91 - 7232888433

+91 - 7627098663

+91 -9829015613

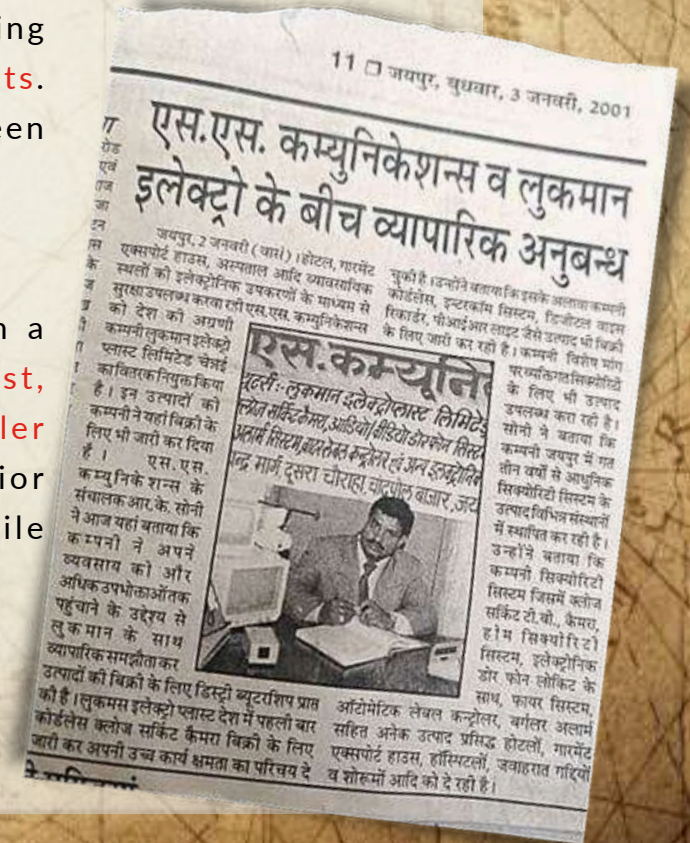
OUR HISTORY

It all began with **Rajendra Kumar Soni**, the **visionary Founder** of **S S Communications**, who embarked on his career at ECE Industries Ltd. (India) in 1993 as a Sales Person. Within two years, he demonstrated exceptional talent and dedication, earning a promotion to Sales Supervisor, responsible for overseeing four sales teams. Rajendra then ventured into diverse companies such as Maruti Engineering Products and Precision Electrical Industries before **ultimately founding S S Communications in 2000.**



Throughout this remarkable journey, we have had the pleasure of collaborating with clients from various industries, successfully delivering over **5000+ projects.** The positive feedback and satisfaction expressed by our customers have been instrumental in attracting new valuable clients to our business.

Drawing upon his wealth of experience, Rajendra infused the company with a fundamental principle - fostering enduring **relationships built on trust, professionalism, and unwavering commitment to customer and dealer satisfaction.** Our vision has always been centered around delivering superior products and services of exceptional quality to customers nationwide, all while maintaining competitive pricing.



INDEX

Discover what's inside this document with our comprehensive Table of Contents.
Navigate effortlessly to the sections that interest you the most.

PRODUCT RANGE OVERVIEW		ABOUT US OVERVIEW		
 CCTV SURVEILLANCE & MONITORING	Pg. 05-08	 COMPANY PROFILE	WHATWEDO, OURCLIENTELE, WHYCHOOSE US, SSC FOUR CORE ELEMENTS	Pg. 01-04
 ACCESS CONTROL & BIOMETRICS	Pg. 09-16	 WORK GALLERY & ADDITIONAL OFFERINGS	GALLERY SHOWCASES OUR TOP-QUALITY WORKMANSHIP, WE ALSO DEALS IN	Pg. 31-32
 FIRE FIGHTING & EMERGENCY SAFETY	Pg. 17-20	SECTOR-SPECIFIC OFFERINGS		
 WALKIE TALKIE & TELECOMMUNICATION	Pg. 21-26	 RESIDENTIAL SOLUTION → Pg.9		
 METAL DETECTORS	Pg. 27-30	 RETAIL SOLUTION → Pg.11		
		 HOTEL & LEISURE SOLUTION → Pg.13		
		 INDUSTRIAL SOLUTION → Pg.15		
		 REAL ESTATE SOLUTION → Pg.19		
		 CORPORATE SOLUTION → Pg.23		
		 HOSPITALITY SOLUTION → Pg.25		
		 EDUCATIONAL SOLUTION → Pg.29		

WHAT WE DO

FROM BIG TO SMALL, WE'VE DONE IT ALL!

Established in 2000, SSC COMMUNICATIONS is a renowned Electronic Safety & Security Company based in Rajasthan, INDIA. We specialize in a comprehensive range of cutting-edge products and services including CCTV, Fire Security, Access Control/Bio-metric, EPABX, Metal Detectors, and Walkie Talkie Solutions.

With a customer-centric approach, we consistently exceed expectations, delivering tailored Products & Solutions to diverse clients such as hotels, schools, offices, factories, corporates, and residential properties. Our extensive product lineup includes CCTV Cameras, Door Locks, Video Door Phones, Alarms, Video conference solutions, Fingerprint Scanners, Metal Detectors, Access Control Systems, Walkie Talkies, and Fire security equipment.

Adhering strictly to the highest safety standards, we provide comprehensive support throughout the installation, maintenance, and repair processes. Our esteemed clientele includes corporate houses, hotels, schools, hospitals, banks, government offices, malls, airports, railways, industries, and residential complexes. As an industry leader, we take immense pride in delivering exceptional products and services.



20K+

CUSTOMERS YEAR OF EXPERIENCE

20+

COMMERCIAL PROJECTS RESIDENTIAL PROJECTS

3000+

2000+

200+

BRANDS

OUR DIVERSE CLIENTELE PORTFOLIO



RBI



KALYAN JEWELLERS



THE CITY PALACE



LIC OF INDIA



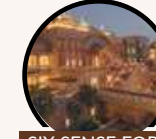
RED TAPE



WE VOIS LABS



SHREE RAM OVERSEAS



SIX SENSE FORT



MSBSS SCHOOL



PODDAR PIGMENTS



JINDAL ECOPOLIS



RAJASTHAN PATRIKA



JAIPUR COTTAGE INDUSTRY



EZULIX SOFTWARE PVT LTD.



LAXMI VILAS PALACE



JEWEL OF INDIA



APEX ENG. COLLEGE



FORT KHIMSAR



VAIBHAV GLOBALS



SURANAS



SAMSONS CLOTHING



ROYAL HERITAGE HAVELI



GLAXO SMITH KLINE



RIICO



HOTEL LMB



GOYAL FASHIONS PVT. LTD



CHOKHI DHANI GROUP



STERLING-ITC



TRANSMODAL MARINE LOGISTICS



KEDIA GROUPS



WONDER CEMENT



RATAN INDUSTRIES



MIDAS SIGNATURE JEWELLERY



ARYA COLLEGE JAIPUR



HCL INFOSYSTEMS



MOTISONS JEWELLERS



PEARL PALACE



AGARWAL CATERERS



SWARNKAR SHIKSHA SADAN



LE MERIDIEN



BALAJI METAL CASTING



EARTH STONE INDIA



RANIWALA JEWELLERS



SHAHPURA HOUSE



NARAYNI ADVERTISING



KUNDAN HOUSE



ANANTA HOTELS



JAYANTI MARKET ASSOCIATION



MITTAL & SONS



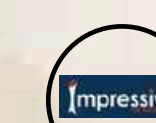
FRAXUS 3D



ORANGE FISH EVENTS



FIESTRO



IMPRESSIVE EVENTS HUB



ANGEL RESORT



K C MEMORIAL HOSPITAL



NVESONS PAPER MILL



EVENT CRAFTER



GOVIND DEV JI TEMPLE

STAY AHEAD OF THE CURVE -
TOTAL SECURITY SOLUTIONS UNDER ONE ROOF

TRUST



WHY CHOOSE US!

Choose SS Communications for your electronic security needs because we **prioritize quality, affordability, and assurance**. Our superior electronic security systems are designed to meet your requirements and ensure the safety of your premises. We offer competitive prices without compromising on the quality of our products and services. Additionally, with every installation, we provide a unique **12-month service warranty**, giving you peace of mind and confidence in your investment

OUR MISSION!

Our Mission is to continue to provide best security and surveillance solutions, giving peace of mind, assurance of protection and safety for our customers. We at S S Communications understand the importance of these two aspects, helps businesses save millions of rupees when it comes to security measures by providing solutions with high quality cameras, metal detectors and fire safety equipment that addresses safety issues in an organizational level

WHERE TRUST AND SECURITY INTERSECT: S S COMMUNICATIONS' COMMITMENT

SSC FOUR CORE ELEMENTS

We don't just deliver products; we provide a partnership committed to your safety and success. With every step, we elevate security, offering comprehensive post-installation support, a diverse array of cutting-edge solutions, and a legacy of self-reliance and expertise. Choose S S Communications, where your security is our unwavering priority

1

AMC AFTER INSTALLATION

Enjoy a Year of Free AMC/Maintenance services. We stand by you long after installation, nurturing security partnerships that last.



2

CONSULTATIVE APPROACH

Expert Advice: gaining access to expert advice. Our consultative approach guides you towards the best security strategy for your unique needs



3

TWO DECADES OF EXPERTISE

Pioneering Since 2000 Two Decades of Trust, Expertise, and Progress - A Legacy of Reliability and Innovation. With over 20 years of experience



4

CUSTOMIZED SOLUTIONS

Tailored Solutions for Diverse Needs: We understand that every client has unique security requirements. Our approach involves crafting customized solutions



WELCOME TO OUR COLLECTION OF FEATURED BRANDS

FIRE SECURITY

CCTV

ACCESS CONTROL

METAL DETECTORS

COMMUNICATION



CCTV SURVEILLANCE



2MP IP Camera

- Resolution - 1920 × 1080
- Brand - Hikvision
- Night Vision - ColorVu & Non ColorVu
- IR Range - 20mtrs
- Motion Detection - Human/Vehicle
- Audio Recording - Yes/No



4MP IP Camera

- Resolution - 2560 × 1440
- Brand - OldArc
- Night Vision - ColorVu
- IR Range - 20mtrs
- Motion Detection - Human/Vehicle
- Audio Recording - Yes



5MP IP Camera

- Resolution - 2560 × 1920
- Brand - Secureeye
- Night Vision - ColorVu
- IR Range - 20mtrs
- Motion Detection - Yes
- Audio Recording - Yes/No



8MP IP Camera

- Resolution - 4K
- Brand - Dahua/CP Plus
- Night Vision - ColorVu
- IR Range -
- Motion Detection - Yes
- Audio Recording - Yes/No



4G/Wi-Fi Camera

- Resolution- 3MP
- Brand -Trueview/OEM
- Night Vision - ColorVu
- IR Range - 20mtrs
- Motion Detection - Yes
- Audio Recording - Yes/No



360 PT Camera

- Resolution - 3MP
- Brand - Trueview/Ezviz/OldArc
- Night Vision - ColorVu & Non ColorVu
- IR Range - 20mtrs
- Motion Detection - Yes
- Audio Recording - Yes
- Power - 5-12V Or Solar Powered



CCTV Packages

- Resolution - 2MP-8MP
- Brand - OldArc/Hikvision/CP Plus
- Easy Installation
- 12months of free service
- Expandable System
- Mobile App Integration



NVR Recorders

- Resolution - 4k Supported
- Brand - CP Plus/Hikvision/OEM
- Output - HDMI and VGA simultaneous
- Channel Supported - 4/8/16/32
- Analytical Features - Yes
- Compression format - H.265+/H.265
- Storage capacity - 2/4/6 SATA



Spy Device & Gadgets

- Mode of Spy Security - Audio and Visual
- Brand - OEM
- Night Vision - Yes/No
- Connectivity - Wi-Fi/GSM/Application
- Battery life - 8hrs
- Audio Recording - Yes/No





CCTV Accessories

- Cable & Connectors
- Racks & PS Safety Boxes
- Power Supplies
- Monitors and Displays
- Surge Protectors
- UPS

Like the paparazzi, but for your Property. No scandalous activity goes unnoticed

OLDARC IS A **RENOWNED BRAND IN THE ACCESS CONTROL AND CCTV INDUSTRY**, RECOGNIZED FOR CRAFTING TOP-TIER DEVICES IDEAL FOR DIVERSE RESIDENTIAL AND COMMERCIAL NEEDS. WITH **OLDARC CCTV**, YOU GET THE ASSURANCE OF A **ONE-YEAR REPLACEABLE WARRANTY**, ENSURING PEACE OF MIND. OUR **ACCESS CONTROL SYSTEMS** SIMPLIFY PREMISES MANAGEMENT, ENABLING EFFICIENT CONTROL AND RESTRICTION OF ACCESS TO YOUR PROPERTY.



  Oldarc2021@gmail.com



OLDARC[®]

WHERE SECURITY MEETS STYLE - KEEPING YOUR PREMISES SAFE WITH A TOUCH OF CLASS AND A WINK!



UNLOCK
OLDARC'S
PRODUCTS
VIA QR
SCAN

MADE IN INDIA - CCTV | ACCESS CONTROL | ELECTRONIC GADGETS

ADVANCED ANALYTIC CCTV



Vandal Proof Camera

- Resolution - 4MP / CMOS ImageSensor
- Brand - Hikvision, CPPlus & OEM
- Night Vision - ColorVu & Non ColorVu
- WDR - Day/Night
- Motion Detection - Human Vehicle Detection
- Audio Recording - Yes/No



ANPR CAMERA

- 4MP High performance ANPR bullet camera
- Brand - CP Plus/Hikvision
- Excellent low-light performance with Dark Fighter technology
- IR Range - 50mtrs
- High Accuracy License Plate Recognition



PTZ Camera

- Resolution - Max. 30fps@5MP, 60fps@1080P
- Brand - Secureeye/CP Plus/Hikvision
- Powerful 30x Optical zoom
- IR Range - 200 Mtr.
- Max 240°/s pan speed, 360° endless pan rotation



AI Analytical Camera

- Resolution - High quality imaging with 6MP resolution
- Brand - Hikvision/CP Plus/ OldArc
- Audio and alarm interface available
- IR Range - 30mtr
- Focus on human and vehicle targets classification based on deep learning



Thermal Camera

- High-Resolution Thermal Imaging 384 x 288
- Brand - Hikvision
- High quality detector
- IR Range - 20mtrs
- Fire Detection Measurements
- Adaptive Image Enhancement



Panoramic Camera

- Resolution - 6MP resolution
- Brand - Hikvision
- 360-Degree Field of View
- 24/7 colorful imaging
- Analytical Features - Yes
- Compression format - H.265+/H.265
- 130 dB WDR technology



Varifocal Camera

- Resolution - 3MP
- Brand - Hikvision/ CPPlus
- Excellent low-light performance
- IR Range - 40mtrs
- Motion Detection - Yes
- Motorized varifocal lens for easy installation and monitoring



Fisheye Camera

- Panoramic fisheye lens Max. 15fps@4K Brand - Hikvision/CP Plus
- Night Vision IR Range - 15 Mtr
- Modes: original & double panoramic supports H.265+ video compression



POE Switches

- Provides Power over Ethernet
- Brand - Tenda/D-Link/CP Plus
- Port Capacity - 4, 8, 16, 24, or 48 ports
- Supports Gigabit Ethernet (10/100/1000 Mbps) on all ports
- PoE Standards: IEEE 802.3af



Storage Devices

- Capacity - Ranging from (GB) to (TB)
- Compatibility - NVRs / Camera
- Brands - Seagate/HP
- Data Transfer Speed - 300mps - 500mps
- Devices - HDD, SD Cards

Enhance surveillance in architectural masterpieces with our wide array of CCTV products

RESIDENTIAL SOLUTION & PRODUCT

⑥ FOR INTRUSION DETECTION



WIRELESS ALARM SENSORS

Wireless Sensors detect unauthorized access, triggering an alarm when tampered

① FOR HOUSE MONITORING

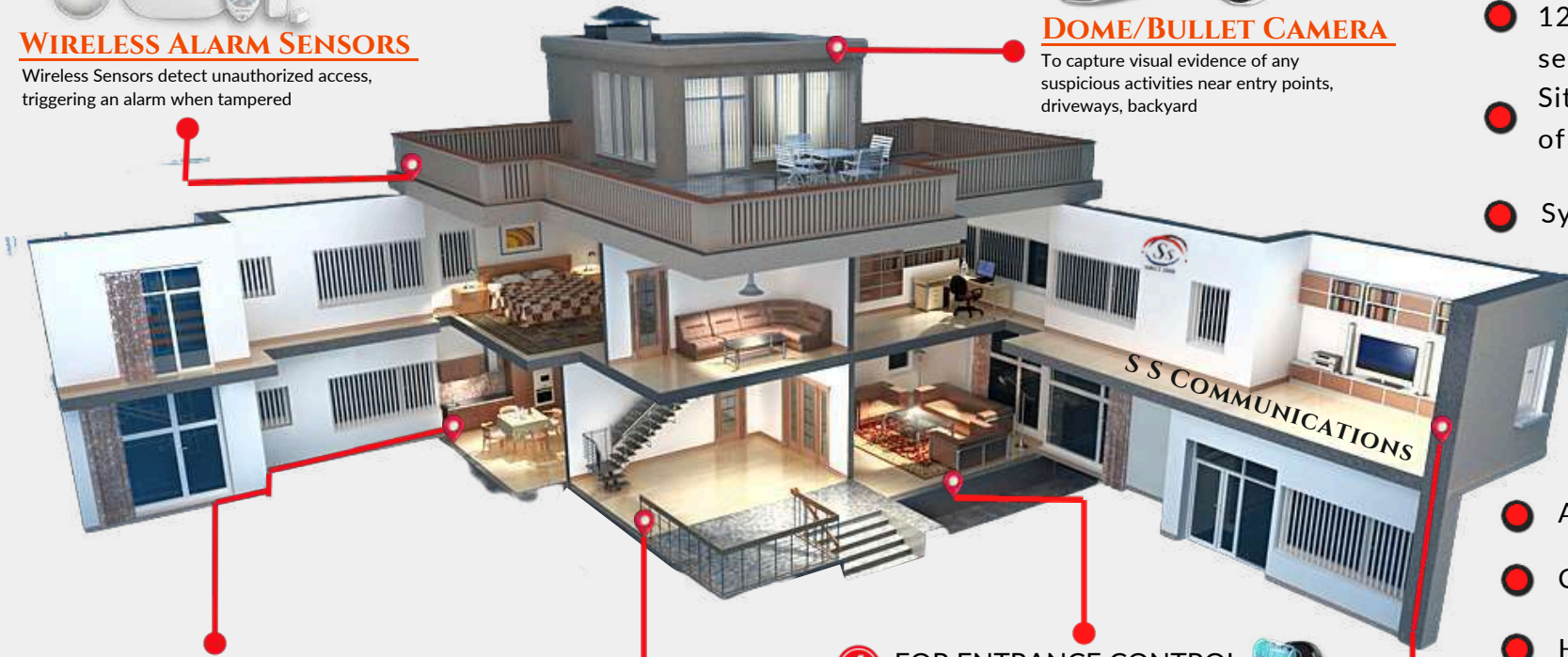


DOME/BULLET CAMERA

To capture visual evidence of any suspicious activities near entry points, driveways, backyard

WHY CHOOSE SSC FOR CCTV

- 20 Years of Extensive Experience & Knowledge
- 12 Months of free AMC service
- Site Assessment by Team of professional engineers
- System Training



② FOR FIRE PROTECTION



FIRE EXTINGUISHERS/BELL

Suppress small fires before they escalate
Mainly in Kitchen/Garage area

③ FOR COMMUNICATION



VIDEO DOOR PHONE

Allow clear visibility of visitors and providing a two-way audio communication

④ FOR ENTRANCE CONTROL



SMART ELECTRIC DOOR LOCK

Offer convenient & Smart to access control your house doors, using smartphones or keyless entry methods

- Affordable & Fair Price
- Centralized System
- High-Resolution Network Camera

⑤ FOR INDOOR SURVEILLANCE



WIRELESS WI-FI CAMERA

Can access the camera remotely using a smartphone allowing real-time monitoring

ACCESS CONTROL & BIOMETRICS



Electric Rim Lock

- High strength stainless steel lock
- Service life- 1,000,000 times
- Brand - Alba/Yale/OldArc
- 5 Keys
- Double connected cylinder



Digital Handle Lock

- Fingerprint/Pin/Card - 300
- Smart Lock - Alexa & App
- Brand - Zkteco/Solity/OldArc
- Suitable Doors - Wooden/Aluminum
- 4 X AA Alkaline Battery
- Two Tongues & Single latches



Smart Glass Door Lock

- Fingerprint/Pin/Card - 200/1000
- Smart Lock - AppControl
- Brand - OldArc
- Lock Type - Double Hook
- Suitable Doors - Glass (10-12mm)
- 4 X AA Alkaline Battery



Wi-Fi Motorized Lock

- Fingerprint/Pin/Card - 300
- Smart Lock - Alexa & App
- Brand - OldArc
- Both Side FP
- Keys - 3 - Double connected cylinder
- Suitable Doors - Wooden/Aluminum
- 4 X AA Alkaline Battery/DC-12V



RFID/Remote Lock

- Remote/Card - 2000 (125KHz)
- Single Cylinder Lock
- Brand - OldArc
- Keys - 3
- Suitable Doors - Wooden
- DC-12V



Smart Face Lock

- Face/Fingerprint/Pin-300
- Smart Lock - App Control
- Brand - OldArc/Solity/OEM
- Lock Type - Four Tounge/3MP Camera
- Suitable Doors - Wooden Door
- 7V Rechargeable (3-4Months)



Flap Crowd Barrier

- Face/Finger/Card Integration
- Material - Acrylic/Stainlesssteel
- Power Requirements - AC100 ~ 120V
- Brand - Zkteco/Timewatch/OEM
- Barrier Movement - Retracting
- Application of use - High traffic Flow



Turnstile/Swing Barrier

- Face/Finger/Card Integration
- Material - Acrylic/Stainlesssteel
- Power Requirements - AC100 ~ 120V
- Brand - Zkteco/Timewatch/OEM
- Barrier Movement - Swing & Turnstile
- Application of use - High traffic Flow



Boom Barrier

- Smart Parking Integration
- Boom Length - Max 6m
- Power Requirements - AC100 ~ 120V
- Brand - Zkteco/Timewatch/OEM
- Barrier Movement - Rotation
- Application of use - High traffic Flow



Baggage Scanner

- Scannertype - X Ray Generator
- Max.Load- 180Kg
- Application: security screening
- Penetration: Up to 40mm of steel
- Image Display : Edge enhancement, image rotation & zooming

Guardians of Access: From Faces to Barriers, We Secure Your World with Innovation

RETAIL SOLUTION & PRODUCT

A JEWELRY UNIT

SHOWROOM SECTION

FACTORY SECTION

3 RETAIL SPACE

Providing Multi-layered approach to Prevent theft, detect security breaches, and respond swiftly to emergencies with complete Monitoring



Dome Camera



Theft Alarm



Remote Panic Alarm



RFID Theft Detection

4 CRAFTING & PRODUCTION

Focusing on fire prevention/suppression, staff safety, ensuring controlled entrance and efficient communication



Fire Prevention/Suppression



PBX Telecom System



Entrance Control & Lock

1 ENTRANCE & EXIT POINTS

Electronic measures for Preventing theft of precious metal ,unauthorized access & Entrance. Enhancing overall efficiency and safety of the jewelry unit.



IP CCTV Camera



Jewelry Metal Detector



Wireless Lock System



Biometric System

5 SAFE/STOCK ROOM

Securing storage of valuable items, integrating Intrusion Detection Sensors coupled with CCTV Surveillance and Electronic Access Logs



Wireless Intrusion Alarm



Electronic Vault/Safe

2 BOUNDARY AREA

Perimeter surveillance is bolstered by the installation of CCTV Cameras & Theft Caution Sensors



Door/Shutter/Beam Alarm Sensor



Face Detection Camera



TIME ATTENDANCE & SECURITY LOCKS



Face + Finger Attendance

- Face/Finger/Card - 300/500
- Brand - Realtime/ZktEco/Matrix/OEM
- Transaction Capacity - 1,00,000
- Communications - TCP/IP,Wifi,4G
- Real-Time Monitoring and Reporting
- Cloud Integration - Yes/No



Face + Finger Access

- Face/Finger/Pin/Card - 1000
- Access ControlTerminal
- Brand - Realtime/ZktEco/Matrix/OEM
- Transaction Capacity - 1,00,000
- Communications - TCP/IP,Wifi,4G
- Real-Time Monitoring and Reporting



Long Range Face

- Face/Pin/Card - 10,000/50,000
- Brand - Realtime/ZktEco/Matrix/OEM
- Transaction Capacity - 2,00,000
- Communications - TCP/IP,Wifi,4G
- Real-Time Monitoring and Reporting
- Touch Screen



Attendance & Payroll

- Real-time Monitoring of attendance & Access
- Brand - Realtime/ZktEco/Matrix/OEM
- Biometric Integration
- Customizable Reporting
- Automated Payroll Calculation



Door Access Controller

- DoorControlled - 1,2 & 4
- Reader &ExitSwitch Supported - 3,6&12
- Finger/Pin/Card - 5,000 - 60,000
- Brand - Realtime/ZktEco/Matrix/OEM
- Transaction Capacity - 1,00,000
- Communications - TCP/IP



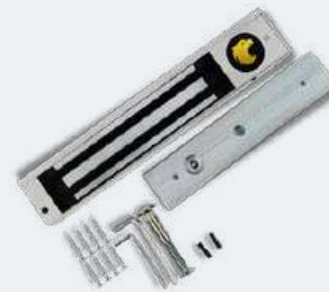
Drop Bolt Locks

- Drop & Surface Bolt Lock
- 5Wire Connection
- Type - Bolt Lock
- Brand - OldArc
- Time Delay - 0/3/6Sec
- Voltage - DC12V
- Suitable for All frames of Doors - Wooden/Glass/Aluminum/Metal
- High Aluminum, Garrulous Line



Magnetic Bolt Lock

- Frameless GlassDoorLock
- 5Wire Connection
- Type - Bolt Lock
- Brand - OldArc
- Time Delay - 0/3/6Sec
- Voltage - DC12V
- Suitable for Frameless Glass Door
- 12-15mm
- High Aluminum, Garrulous Line



E- Magnetic Lock

- Electromagnetic Lock
- Force Category - 350/600/1000lbs
- Wire Connection - 2 & 5
- Brand - OldArc
- Strong Suction with Efficient heat dissipation
- Multidoor Application
- Voltage: DC12V and DC24V



Access Card Reader

- Connectivity - WiegandProtocolSupport
- Multi-Frequency - Proximity& MIFARE
- Read Range : Up to 10CM
- Less than 0.2 second Response Speed
- Brand - Realtime/ZktEco/Matrix/OEM
- Real Time Data Transfer



QR Code Reader

- Material - PC and Tempered glass
- Decoding support - QRand One dimensional code
- Long range Reader = upto 100m
- Reading speeLight source
- Built-in LED light source

Face + Finger Attendance, Access, and More: Where Your Presence is Your Key

HOTEL SOLUTION & PRODUCT



3 HALL & CORRIDOR AREA

Covering area for security, control access, Emergency Communication for assistance & Fire Suppression Systems



Emergency Alarm

Fire Prevention/Suppression

Smoke Sensors

Corridor CCTV

4 GUEST ROOM & INDOOR AREA

Providing a comfortable and secure environment for guests and taking measure for Theft Prevention



Emergency Med Kit

Hotel Safe/Cabinet Locks

RFID Card Access Control

2 ENTRANCE & LOBBY AREA

Providing identity verification, Internal/External communication, detecting potential threats, comprehensive Lobby area monitoring



X Ray Scanner

Walkie Talkies

PBX Telecom System

Biometric Access

Face Detection Camera

Security Metal Detector

Panic Alarm

Wide View CCTV

5 EMPLOYEE ONLY AREA

Ensuring the safety of server rooms, storage areas, and offices is vital for hotel operations & protection



Hotel Fire Life Safety

Biometric Attendance & Access

Special Fire Extinguisher

1 PERIMETER & PARKING AREA

Offering comprehensive surveillance, Vehicle screening process, Parking Control systems, Boundary Intruder Detection Completely ensuring the safety of guests, vehicles, and hotel property.



Vehicle Barrier & Camera

Turnstile People Entrance

Vehicle Inspection Trolley

Guard Essentials

360 Degree Camera

6 KITCHEN

Implementing robust safety & security measures in the kitchen for hazards related to fire, sharp objects, heat, chemicals, and more



K Type Extinguisher

Smoke Sensors

Fire Blanket & Safety Wear

ACCESS CONTROL & ACCESSORIES



Touch Sensitive Reader

- Pin/Card - 2000
- Touch Sensitive Panel
- Brand - Realtime/ZktEco/Matrix/OEM
- Elegant Design
- Wifi & App Connectivity
- Used for external reader for Multi door Controllers



Finger + Card Reader

- Finger/Pin/Card - 500
- Brand - Realtime/ZktEco/Matrix/OEM
- FP Sensor - Optical sensor
- High Speed Verification
- Push Keypad
- Used for external reader for Multi door Controllers



Push Exit Switch

- Stainless steel Panel, Steel Button
- Mechanical life up to 10,00,000 times
- Brand - OldArc/OEM
- Output Contact - NC/COM
- Suitable for Door - Hollow Door
- Access Control Switch



Touch Exit Switch

- Touch Sensing Technology Access
- Control Integration Brand - OldArc/OEM Keyless Entry & Exit
- Weatherproof and Durable Design
- Output Contact - NC/COM Voltage - DC12V



No Touch Exit Switch

- Contactless Operation
- Sensor Distance- 5-10Cm
- Output - NO, NC, COM
- Voltage - DC12V
- LED Backlight-Blue LED on standby and Red LED on approaching



Lock Power Supply

- Electric Lock Power Supply
- Input: 220VAC
- Remote Variant
- Brand - OldArc (Made in India)
- High conversion efficiency
- Less noise



Remote Control Kit

- RF Wireless Switch Receiver + Remote Control Transmitter
- Two Remote
- Brand - OldArc (Made in India)
- DC-12V Working Voltage
- 433MHZ - Working Frequency
- 100mtr Remote Control transmission



RFID- Card/Tags

- RFID (EM) 125Khz/Mifare13.56Mhz (MF)
- ID/IC Thin Cards/Keytags
- Material - High quality PVC / PET / ABS
- Suitable with all access Control Devices
- Durable PVC or composite material
- Secure Data Transmission and Storage



UHF Card/Tags

- Card - Keytags
- Frequency - 860~960MHz
- Material - High quality PVC / PET / ABS
- Period of use - Read and write 100,000 times
- Recognition distance - 1-35m (depending on the antenna gain)



Smart Cabinet Locks

- Fingerprint, Password Advanced
- Biometric technology for better response
- AAA Battery Operated
- Brand - OldArc/OEM
- Automatic motorized mechanism
- Widely used in drawer, cabinet, wardrobe etc.

Beyond Keys: Redefining Access with Smart Solutions, Because Modern Demands More

INDUSTRIAL SOLUTION & PRODUCT

5 INFRASTRUCTURE AREA

Ensuring the protection and integrity of critical infrastructure with Emergency Communication & Worker safety



- Jewelry Manufacturing Units
- Textile Factories
- Printing and Dyeing Factories
- Cement Plants
- Wooden Furniture Plants
- Sheet Manufacturing Units
- Mines

4

PRODUCTION/STORAGE AREA

Covering protection of assets, maintain operational efficiency, and prevent unauthorized access



3

OFFICES & CONTROL ROOM

Covering factory offices for safety, access control, Employee Check in/out and Communication



1

ENTRANCE/EXIT AREA

Security control measures at the entrance gate to regulate and inspect vehicular and personnel access to the factory premises effectively



2 BOUNDARY / PERIMETER PROTECTION

Securing the factory Parameter against intrusions and break-ins



VIDEO DOOR PHONE & ALARM SYSTEM



IP Video Door Phone

- Indoor/Door Station (Expendable)
- IP video intercom kit for villa or house
- Brand - BasIP/Hikvision/Panasonic
- Model - DS-KIS602 (Hikvision)
- High-definition Video Resolution
- Communications - TCP/IP & Wi-fi
- Mobile App Compatibility
- Memory Card supported



Analog Video Door Phone

- Indoor/Door Station(Expendable)
- Intercom system
- Model - VDP SVN511SX
- Brand - CP Plus/Hikvision/Panasonic
- High-definition Video Resolution
- Communications - Audio & Video Cable
- Lock Integration For Access control
- Memory Card supported



Multi Apartment VDP

- Multi Door Bell Outdoor Unit
- Compact design for Apartments
- Brand - CP Plus/Hikvision/Panasonic
- High-definition Video Resolution
- Communications - Audio & Video Cable
- Flexible Modular Design
- Memory Card supported



Wireless Smart VDP

- Contactless video doorphone Motion
- Enabled VDP Brand - Godrej/OEM High-definition Video Resolution
- Communications - Wi-Fi Integration with a dedicated mobile app for Android and iOS devices



Wi-Fi DoorBell

- Wide-angle camera lens
- Wi-Fi Video Doorbell with Chime
- Two-way audio communication
- Brand - OEM
- Communications - Wi-Fi
- Integration with a dedicated mobile app for Android and iOS devices



Wireless Alarm System

- AXPro HUB Wireless Alarm Kit
- Communications - TCP/IP, Wifi
- Brand - Hikvision/Securico/AJAX
- Real-Time Monitoring and Reporting
- Support up to 128 wireless devices
- Arming/Disarming
- Long battery life



GSM Alarm System Kit

- Intruder Alarm Kit with GSM Dialer
- Communications - GSM/Sim Module
- Brand - Securico/ThinkX/AJAX
- Mobile Call Alert
- Material: High-quality ABS plastic
- Arming/Disarming
- Long battery life



Remote SOS Alarm

- Panic Alarm SOS Remote operated
- Inbuilt Power Supply
- 110dB Sound
- Power - 12V Adaptor
- Remote Range - 100mtr
- Sound Range - 300mtr
- As long as keep press Siren remain ON



Wireless Smoke Sensor

- Photoelectric Sensor
- Simple wall or ceiling installation
- Brand - Securico/AJAX/OEM/ASES
- AA Battery-powered operation
- Provide early fire warning
- Built-in alarm with sound intensity



PIR Motion Sensor

- Detection Method - Passive Infrared; Microwave
- Detection Range 12m
- Brand - Hikvision/Securico/OEM
- Easy installation design
- Communications - Wireless through App
- Pet Immunity - 30Kg

Smarter Security, Wirelessly Delivered: Because Cutting Cords Extends to Safety

FIRE FIGHTING & SAFETY



YOUR PATH TO UNPARALLELED FIRE SAFETY AND SECURITY

As you journey through these pages, you'll uncover a treasure trove of equipment that stands as a fortress against fire's relentless advance. From flame-retardant materials to sophisticated early warning systems, we empower you to defend your spaces, protect your loved ones, and secure your investments



FIRE SUPPRESSION & EQUIPMENTS



ABC Fire Extinguisher

- Type of Fire-Class A(Wood & paper) Class B (Flammable liquids, petrol, Oil) Class C (Flammable Gases) & Electrical Fire Brand - Safepro/Vrinda/Ceasefire Capacity - 4/6/9Kg (Dry Chemical Powder) ISI Certified - Cartridge / Pressure Filled Fully refillable - 1 Year Warranty Squeeze grip operation



CO2 Fire Extinguisher

- Type of Fire - Fights Class B, C, and electrically started fires
- Brand - Safepro/Vrinda/Ceasefire
- Capacity - 2/3/4.5/9Kg
- ISI Certified - 8sec Discharge time
- Fully refillable - 1 Year Warranty Squeeze grip operation
- Extinguishing Medium - Co2 Gas



Foam Fire Extinguisher

- Type of Fire-Fights Class Type A & B
- Brand - Safepro/Vrinda/Ceasefire
- Capacity - 6/9Ltr ISI Certified - Cartridge / Pressure Filled Fully refillable - 1 Year Warranty Forms a foam blanket to suppress fire Extinguishing Medium - Aqueous film forming foam (AFFF)



- Type of Fire-Fights Class Type A, B & Electrical equipment Brand - Safepro/Vrinda/Ceasefire Capacity - 2/4/6Kg ISI Certified - Jet length 2-3 mtrs Fully refillable - 1 Year Warranty Eco Friendly leave no residue Extinguishing Medium - Clean Agent Gas



Tube Fire Suppression

- Pre-engineered fire suppression systems
- Automatic activation - Direct/Indirect
- Application - data centers, control rooms, electrical cabinets, engine compartments and more
- Tubes to detect and suppress fires in various environments
- Available in Clean Agent/CO2



Wet Chemical Based

- Type of Fire - Fights Class K (Cooking oil/Kitchen fire) A & C
- Brand - Safepro/Vrinda/Ceasefire
- Capacity - 2/4/6/9ltrs
- ISI Certified - Pressure Filled
- Fully refillable - 1 Year Warranty
- Creates Soapy Foam (Saponification with oil)
- Extinguishing Medium - Wet Chemical



Metal Fire Extinguisher

- Type of Fire-Class D fire risk including light flammable metals like Li, Na, Mg, etc
- Brand - Safepro/Vrinda/Ceasefire
- Capacity - 4/6/9Kg
- ISI Certified - Pressure Filled
- Fully refillable - 1 Year Warranty
- Extinguishing Medium - TERNARY EUTECTIC CHLORIDE (TEC) Powder



Wheeled Extinguisher

- Used in Commercial & Industrial Applications (for big fires) More Capacity & Mobility Available in ABC/DCP/CO2/Foam Long Range Hose Pipe (2-4mtrs) ISI Certified - 1 Year Warranty Both Cartridge and Pressured type Expellant - Co2 / Nitrogen



Automatic Fire Modular

- Automatic Modular Type Fire Suppression Extinguisher Temperature activation bulb (68°C) & Discharge sprinkler - (Detection with suppression of fire) Available in Clean Agent/ABC Powder Ceiling Mounted - Vertical Range 2-6m Coverage Area - 2-6 square meter Capacity - 5/10/15Kg



AFO Fire Ball

- Automatic Fire Off Ball (1.3Kg)
- Coverage area - 30-60sqft
- Audio Alert - 138-decibel noise
- 3 year warranty (ABC Powder type)
- Self-activates after about 3 to 5 seconds of fire contact
- Eco Friendly

REAL ESTATE SOLUTION & PRODUCT

① PARKING/ ENTRANCE AREA



② CORRIDOR & STAIRS



③ RESIDENTIAL UNITS, SERVER ROOMS & LIFTS



④ COMMON AREAS (GYM, POOL, LOUNGE)



⑤ PERIMETER/EXTERNAL AREA



APARTMENT SCENARIO

FIRE ALERT & EMERGENCY SAFETY EQUIPMENTS



Fire Hydrant System

- Hose Reel/Drums - Malaysian&ISI
- Outlet/Inlet Valve
- Hose Pipe/Cabinets
- Branch Pipes & Nozzles
- RRL Hose pipe
- Instantaneous Male/Female Coupling
- Product Supply - Third Party Integration



Fire Alarm System

- Addressable/Conventional Zones - 2/4/8/16/32 Brand -
- Securico/Agni/OEM Sensors -
- Flame/Heat/Smoke/Gas Operating Voltage 24V. APPLICATIONS:
- Banks & ATMs | Offices | Warehouses | Industries



Long Range Siren

- Siren Face - Single/Double
- Mounting Type - Horizontal/Vertical
- Brand - Kheraj (AC/DC Sirens)
- Power Voltage (AC) - 110V/220V/400V
- Audible Range (Km) - 0.10/0.20/0.50/1/1.50/2/3.25/5/8/11/16Km



Standalone Smoke Alarm

- Types - Ionisation / Photoelectric Brand
- - ASES/Ceasefire/Securico/OEM Power Supply - 9 Volt Battery Audible range - 85-90 dB at 1-2mtr Red-Steady Red in Alarm condition Cost effective alarm solution Application - Server Rooms/Storage Areas/Residential Buildings/Hospitals



Break Glass Fire Alarm

- Emergency MCB Fire Hooter
- Alarm is sturdy and durable
- 220 volt AC
- Mounting Type - Wall Mount
- Loud sound to alert people in case of an emergency
- Break Glass in case of emergency



Fire Resistant Blanket

- Fire safety Blanket (Weight-600gms)
- All round protection - Flame-resistant & self-extinguishing
- Material Type - Glass fibers, Kevlar, wool, or PTFE
- Application - Kitchen, Car, Fire Escape, Factories
- Size - 3 feet by 3 feet



Fire Proximity Suit

- Aluminized Fire Proximity Suit
- Multi Layer system
- Fire Resistant
- Outer Shell - Moisture Barrier - Heat Barrier - Inner Lining
- Used in firefighting bulk flammable liquids or flammable gas
- Universal Free Size



Safety Shoes - Gloves

- Applications - Construction, Manufacturing, Laboratory work, Firefighting
- Personal Protection Equipment
- Material - Leather/synthetic/Kevlar/PTEE /Rubber
- Resistant to Oil /chemical / Electrical hazard/cuts/ abrasions/Fire/Hard material



Emergency Med Kit

- Ideal for hotels, large businesses and areas with high volumes of staff, visitors or customers
- Risk Type - Eye care, Cuts, Muscle injuries, Resuscitation
- Kit Contains - Emergency Medical Supplies (Bandage, Dressings etc)
- Compact/Light/Portable



Fire/life Safety Equipment

- Fire sand buckets
- Emergency Fire Escape Ladder
- Public Announcement System
- Safety Helmet
- Flame Retardant Glass Fibre Rope
- Safety Harness
- Smoke Mask
- Fire Man Axe

Fire Alert & Emergency Gear : Because Some Days, Flames Just Need a Timeout

WALKIE TALKIE & EPABX SYSTEM



WELCOME TO THE WORLD OF SEAMLESS AND EFFICIENT COMMUNICATIONS SOLUTIONS BY SSC. EXPLORE OUR CUTTING-EDGE WALKIE TALKIES AND EPABX SYSTEMS DESIGNED TO TRANSFORM THE WAY YOU CONNECT, COLLABORATE, AND OPERATE.

I am the conductor of communication, harmonizing connections seamlessly and effortlessly

I'm the voice that bridges the gap, connecting you in an instant, wherever you roam

**STAY
AHEAD,
STAY
CONNECTED**



- Extensive Range
- WPC Certified Radios
- 1 - Warranty & Service
- Tailored EPABX Solutions
- Expert Guidance

TWO - WAY WALKIE TALKIE



Aspera Victor

- License FreeUHF 446Mhz
- Range - 1-1.5Km (Approx.)
- Brand - Aspera (Long standby)
- Battery Backup - 28Hrs - 3000mAh
- Channel - 16 (Programmable)
- Power output- 0.5W
- Weight -130g



Lenovo CC100

- License FreeUHF 446Mhz Range - 1-1.5Km (Approx.)
- Brand - Lenovo
- Battery Backup - 20Hrs - 2600mAh
- Channel - 16 (Programmable) Power output- 0.5W
- Weight -155g



Lenovo N7

- License FreeUHF 446Mhz
- Range - 1-2Km (Approx.)
- Brand - Lenovo (Clear Voice)
- Battery Backup - 17Hrs -1700mAh
- Channel - 16 (Programmable)
- Power output- 0.5W
- Weight -360g



Lenovo N99

- License FreeUHF 446Mhz
- Range - 2-3Km (Approx.)
- Brand - Lenovo (Long Antenna)
- Battery Backup - 17Hrs -3000mAh
- Channel - 16 (Programmable)
- Power output- 0.5W
- Weight -450g



Aspera Vista

- License FreeUHF 446Mhz
- Range - 2-3.5Km (Approx.)
- Brand - Aspera (LED Display)
- Battery Backup - 20Hrs -4200mAh
- Channel - 16 (Programmable)
- Power output- 0.5W
- Weight -360g



Aspera V7

- License Free UHF446Mhz
- Range - 2Km (Approx.)
- Brand - Aspera
- Battery Backup - 15Hrs - 2000mAh
- Channel - 16 (Programmable)
- Power output- 0.5W
- Weight -190g



Aspera AD-90

- License FreeUHF 446Mhz
- Range - 2.5-3Km (Approx.)
- Brand - Aspera
- Battery Backup - 20Hrs - 2300mAh
- Channel - 32 (Enhanced Encryption)
- Power output- 0.5W
- Weight -259g



Aspera V9

- License Free UHF446Mhz
- Range - 2Km (Approx.)
- Brand - Aspera(Clear Voice)
- Battery Backup - 17Hrs -2200mAh
- Channel - 16 (Programmable)
- Power output- 0.5W
- Weight -237g



Aspera IP-360s

- License Free PoC + Analog
- SimBased IP Radio (Hybrid model)
- Range - Nation Wide Range
- Brand - Aspera
- Battery Backup - 20Hrs -3200mAh
- Channel - 200
- Callback/Group Call/Dual PTT
- 2G, 3G, WCDMA & 4G LTE



Motorola Radios

- License Based WalkieTalkie
- Range - Up to 10-56 km (Approx.)
- Brand - Motorola
- Battery Backup - 20Hrs -4200mAh
- Channel - 16 - 60
- High Power / Long Range
- Output Power: 5 watts.

Power in Your Palm: Walkie Talkies That Make Communication Walk the Talk

CORPORATE SOLUTION & PRODUCT

BUSINESS BUILDING SCENARIO

4 SERVER/IT ROOM

By deploying these advanced solutions in server rooms and infrastructure, corporate buildings can ensure data reliability, business continuity, and enhanced security in their IT



Fire Extinguisher/Suppression

Key/Card Access control

Biometric Door Locks

AI Face CCTV

5 CONFERENCE/MEETING ROOM

Ensuring Solution for productivity, collaboration, and seamless communication, thereby contributing to the overall success of corporate endeavors



Video Conference Meeting System

PBX System

6 WORKSPACES/OFFICE

Workspaces are the heart of a corporate environment- ensuring that these areas are optimized with proper communication, authorized access, and safety



Time Attendance

EPABX Solution

Fingerprint Access Control

3 STAIRCASE & EMERGENCY EXIT

These measures are vital for swift and organized evacuations, providing a sense of preparedness in the event of any unforeseen circumstances.



Fire Sensor & Alert Alarm

Emergency Evacuation Measures

2 PARKING AREA/PERIMETER

For securing the outer boundaries of the premises, ensuring a controlled and safe environment, and preventing unauthorized access to the corporate office area.



Intrusion Sensors

360 CCTV Camera

Vehicle Barrier & Camera

1 ENTRANCE & LOBBY AREA

The combination of access control & surveillance system to regulate Entrance, monitor activities, and facilitate efficient communication with Emergency Alert System



IP Bullet Camera

Biometric Authentic Entrance

Turnstile People Entrance

Fire Hose

WIRELESS RANGE BOOSTER & ACCESSORIES



Booster AD-R500

- Long Range Booster(Repeater)
- Multi voice calling
- Need License
- Multi-channel (99 channels)
- Power output- 50W
- working mode (simplex, duplex and repeat)
- Access authentication



Booster VR-10

- Long Range Repeater for wide range Coverage
- Using as a mobile repeater
- Need License
- 64 Programmable channel
- Power output- 8W
- working mode built-in duplex and power supply



Booster VR-50

- High power base repeater
- Using as a mobile repeater
- Need License
- 99 channel Supported
- Power output- 45Watts non-stop run
- working mode built-in duplex and power supply



Base Station AD-M810

- Dual mode Mobile Radio (Analog & Digital)
- Walkie talkie station for vehicle
- Need License
- GPS/SMS
- Power output- 50W
- Individual call, group call and all call, Emergency Call



Base Station VM-81

- Mobile Radio
- Walkie talkie station for vehicle
- Need License
- 45 W High power Output
- 200 Channels
- LCD Display
- Individual call, group call and all call, Emergency Call



Lenovo Radio Cover

- Special Accessories tailored for Lenovo Walkie talkies
- Holes design for clear listening and speaking
- All round protection
- With a lanyard, easy to be hung, small and portable



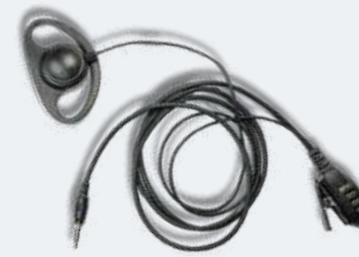
Aspera Radio Cover

- Special Accessories tailored for Aspera Walkie talkies
- Holes design for clear listening and speaking
- All round protection
- With a lanyard, easy to be hung, small and portable



Lenovo Hand-Free

- Hook style earphone Compatible with Lenovo & other brand radios
- PTT button Listen and speak through the earphone
- C- Type Interface
- Crystal clear sound quality in noisy places



Aspera Hand-Free

- D Shape style earphone Compatible with Aspera & other brand radios
- PTT button Listen and speak through the earphone
- 3.5mm TRS Type jack
- Crystal clear sound quality in noisy places



Other Accessories

- Antennas
- Batteries
- Chargers
- Cables
- Belt Clips
- Brands - Motorola/Aspera/Lenovo

Instant Link, Zero Hurdles: Speak and Listen with Ease

HOSPITALITY SOLUTION & PRODUCT

5 MEDICAL OPERATING/PATIENT ROOMS



Advance AI CCTV



Fire Extinguisher & Safety



Biometric Authentic Entrance



EPABX Solution

4 LOBBY/HALLWAY/ CORRIDOR



Emergency Alarm



Fire Suppression Systems

3 ADMINISTRATIVE OFFICES



EPBX System



Biometric Access & Attendance



Smoke Sensor & Alarm

2 ENTRANCE/WAITING AREA



IP CCTV Camera



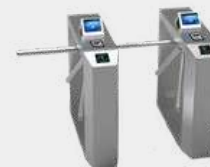
Vehicle management Barrier



360 CCTV Camera



Emergency Evacuation Measures



Turnstile People Entrance



Panic Alarm

1 PERIMETER/EMERGENCY EXIT

EPABX & TELECOMMUNICATION



Hybrid IP PBX System

- Integrated IP-PBX System (Eternity PENX & NENX)
- Expandable/Scalable
- Voice-Over-IP Solution
- Brand - Panasonic/Matrix/Syntel
- Least Cost Routing
- Supports Analog ,Digital and IP extensions
- Extensions for Android/iOS Smartphones
- SMS Applications



Digital PBX System

- VISIONPRO-TheDigitalPBX forSmall Offices
- Digital, Scalable wide range of features
- Efficient communication and call management
- CLI based Routing
- Brand - Matrix/Centrex/CCL/Panasonic
- Caller Line Identification (CLI)
- Allowed and Denied list



1/16 PBX Series

- 1Outside line(CO) & 16 Extensions
- CCL Model 1/16
- For small businesses with a limited number of employees
- Brand - Matrix/Centrex/CCL/Panasonic
- Pleasant Hold Music
- Unlimited Internal Conference
- Call Routing & Forwarding
- CLI - DTMF and FSK



2/32 PBX Series

- 2Outside line(CO) & 16 Extensions
- DigitalPBXMatrix (Vision pro)
- For small businesses with a limited number of employees
- Brand - Matrix/Centrex/CCL/Panasonic
- Pleasant Hold Music
- Unlimited Internal Conference
- Call Routing & Forwarding
- CLI - DTMF and FSK



4/32 PBX Series

- 4Outside line(CO)&32 Extensions
- Hybrid IP Model (Matrix Eternity NENX)
- For Medium size businesses with increasing number of employees
- Brand - Matrix/Centrex/CCL/Panasonic
- Pleasant Hold Music
- Unlimited Internal Conference
- Call Routing & Forwarding
- CLI - DTMF and FSK / expandable



24/128 PBX Series

- 24Outsideline (CO) & 128Extensions
- Hybrid IPModel (MatrixEternity PENX)
- Good option for large businesses with a high volume of calls
- Brand - Matrix/Centrex/CCL/Panasonic
- Unlimited Internal Conference
- Call Routing & Forwarding
- CLI - DTMF and FSK / expandable



IP Telephone

- IPphones arecompatiblewith VoIP
- Graphical LCD
- Speaker Phone
- Desk mount
- Brand - Matrix/Centrex/CCL/Beetel
- Model SPARSH VP210E
- High-Quality Audio
- Conference, Redial, Transfer



Digital Telephone

- Type: Digital KeyPhone Corded & Cordless
- Direct Station Selection (DSS) Keys Digital phones are compatible with PSTN Brand - Matrix/Centrex/CCL/Beetel Model Matrix
- Eon510 240*64 Pixels Graphical LCD
- Conference, Redial, Transfer



Analog Telephone

- Type: Analog Telephone
- Corded & Cordless
- Speaker Phone
- Backlit LCD
- Brand - Matrix/Centrex/CCL/Beetel
- Model BEETEL M59
- Caller ID Support: Yes
- CLI - DTMF and FSK / expandable



Accessories

- Expansion cards
- Telephone Module
- Rbsset box
- 24/10 pair Cable
- R#11 Connectors

Efficient Communication : Because Yelling Across the Room is So Last Century

METAL DETECTOR

I fit in your palm, yet my power uncovers concealed metals wherever you go.



I delve into the depths, revealing truths hidden beneath the Earth.

I stand sentinel at entrances, ensuring safety flows seamlessly through me



SECURITY METAL DETECTORS

Uncover the Unseen : Empower your security team with the precision and convenience of our handheld & Door Frame metal detectors, ensuring thorough scans for utmost protection

UNDERGROUND METAL DETECTORS

Unlock Hidden Treasures : Let our underground metal detectors be your guide to unearthing hidden riches, historical artifacts, and valuable resources, turning every adventure into a quest for the extraordinary



HAND HELD & DOOR FRAME METAL DETECTORS



Sivananda HHMD

- High Sensitivity Metal Detector
- Search application - Hidden Gold/Gutka pouches/blades/pin
- Metal Detection Sensitivity - 0.2g of Ferrous & Non - Ferrous
- Battery Operated - 9V - Rechargeable - 20hrs
- Alarm Mode - Visual/Audio



OldArc HHMD MD-01

- Security Hand Held Metal Detector
- Search application - Knife/Mobile Phone/Gutka pouches/blades
- Metal Detection Sensitivity - 2g of Ferrous & Non - Ferrous
- Battery Operated - 9V - Rechargeable - 30hrs
- Alarm Mode - Visual/Audio



OldArc HHMD SM-10

- High Sensitivity Metal Detector
- Search application - Hidden Gold/Gutka pouches/blades/pin
- Metal Detection Sensitivity - 0.1g of Ferrous & Non - Ferrous
- Battery Operated - 9V - Rechargeable - 20hrs
- Alarm Mode - Visual/Audio



Metscan HHMD MD-03

- Security HandHeld MetalDetector
- Search application - Hidden Gold/Gutka pouches/blades/pin
- Metal Detection Sensitivity - 2g of Ferrous & Non - Ferrous
- Battery operated 9V / Rechargeable 30Hrs
- Alarm Mode - Visual/Audio



Adams ER3000

- MostSensitiveMetal Detector
- Search application - Hidden Gold/Metal in body cavity/blades/pin/sim
- Metal Detection Sensitivity - 0.03g (Sensitivity Control Knob)
- Battery operated 9V / Rechargeable 360Hrs
- Alarm Mode - Visual/Audio



Single Zone DFMD

- Single detection zone/ Detectingarea
- Power Supply - AC100 to 240V
- Brand - OEM/Zkteco/Hikvision
- Master Control Board - sound & LED alarm
- People Counting (With & Without Metal)
- Highest sensibility range - 0-300
- Weight - 60-80Kg
- 20min Quick Installation



6 Zone DFMD

- 8detectionzones / Detectingareas
- Power Supply - AC 100 to 240V
- Brand - OEM/Zkteco/Hikvision
- Master Control Board - sound & LED alarm
- People Counting (With & Without Metal)
- Highest sensibility range - 0-300
- Weight - 60-80Kg
- 20min Quick Installation



18 Zone DFMD

- 18detection zones /Detectingareas
- Power Supply - AC 100 to 240V
- Brand - OEM/Zkteco/Hikvision
- Master Control Board - sound & LED alarm
- People Counting (With & Without Metal)
- Highest sensibility range - 0-300
- Weight - 60-80Kg
- 20min Quick Installation



33 Zone DFMD

- 33detection zones /Detectingareas
- Power Supply - AC 100 to 240V
- Brand - OEM/Zkteco/Hikvision
- Master Control Board - sound & LED alarm
- People Counting (With & Without Metal)
- Highest sensibility range - 0-300
- Weight - 60-80Kg
- 20min Quick Installation



45 Zone DFMD

- 45detection zones /Detectingareas
- Power Supply - AC 100 to 240V
- Brand - OEM/Zkteco/Hikvision
- Master Control Board - sound & LED alarm
- People Counting (With & Without Metal)
- Highest sensibility range - 0-300
- Weight - 60-80Kg
- 20min Quick Installation

Unveil Hidden Truths: Where Hands and Doorways Detect More Than Meets the Eye

EDUCATIONAL SOLUTION & PRODUCT

SCHOOL CAMPUS SCENARIO

3 ACADEMIC SPACES

Classrooms | School Library | Laboratories



2 ADMINISTRATIVE OFFICES

Staff Area | Archive Rooms | Financial Offices



4 GATHERING SPACES

Corridor | Halls | Multipurpose Rooms



5 IT INFRASTRUCTURE & SECURITY

Server Room | Exit Points | Staircase



1 ENTRANCE/OUTDOOR SPACES

Playgrounds/Entrance Gate/Parking



UNDERGROUND SEARCH METAL DETECTOR



Minelab Go Find 66

- Go Find Underground Metal Detector
- Coil Size & Depth - 10inch - 3 to 4ft
- Brand - Minelab (Australia) Working Frequency - 12Khz Search Target application - Relic/Coins/Old Treasures Battery - 4x AA Battery
- Target ID - Image icon



Nokta Simplex Plus

- Simplex Underground Metal Detector
- CoilSize &Depth - 11inch - 3 to5ft
- Brand - Nokta Makro (Turkey)
- Search system - Sound & ID
- Working Frequency - 12Khz
- Search Target application - Relic/Coins/Old Treasures/Metal
- Target ID- 0-99



Minelab Vanquish 540

- Vanquish UndergroundMetal Detector
- CoilSize & Depth - 12inch - 3 to5.5ft
- Brand - Minelab (Australia)
- Search system - Sound & ID
- Working Frequency - 5/10/15/20/40Khz
- Search Target application - Relic/Coins/Old Treasures
- Target ID- -9 to 40



Nokta Impact Pro

- Impact Underground MetalDetector
- Coil Size & Depth - 9/11/17inch - 4 to 8ft
- Brand - Nokta Makro (Turkey)
- Search system - Sound & ID
- Working Frequency - 5/14/20Khz
- Search Target application - Relic/Gold Nugget/Old Treasures
- Target ID- 0-99



Garrett Ace Apex

- Garrett Ace Apex MetalDetector
- CoilSize & Depth - 11inch - 3to5ft
- Brand - Garrett (USA)
- Search system - Sound & ID
- Working Frequency - 5/10/15/20Khz
- Search Target application - Relic/Coins/Old Treasures
- Target ID- 0-99



Minelab Equinox

- Models - 600/800/900 Coil Size &Depth - 11inchor15inch - 3 to 6ft
- Brand - Minelab (Australia) Search system - Sound & ID
- Working Frequency - 5/10/15/20/40Khz
- Search Target application - Relic/Coins/Old Treasures



Nokta The Legend Pro

- Legend Underground Metal Detector
- CoilSize &Depth - 12 or 6inch - 4to5.5ft
- Brand - Nokta Makro (Turkey)
- Search system - Sound & ID
- Working Frequency - 4/10/15/20/40Khz
- Search Target application - Relic/Gold Nugget/Old Treasures
- Target ID- 1-60



Gold Monster 1000

- Gold Monster Nugget MetalDetector
- Coil Size &Depth - 10 & 5inch - 1.5-3ft
- Brand - Nokta Makro (Turkey)
- Search system - Sound & Bar
- Working Frequency - 45Khz
- Search Target application - Gold Nuggets
- Mode- Gold (Iron reject), Deep All-Metal



Garrett ATX Pro

- Garrett ATXMetal Detector
- CoilSize &Depth - 8/12/14inch - 4 to 7ft
- Brand - Garrett (USA)
- Search system - Sound
- Working Frequency - 5/10/15/20Khz
- Search Target application - Relic/Gold Nugget/Old Treasures
- Pulse Induction Machine



3D Imaging DSMD

- Invenio Pro Imaging SystemDetector
- CoilSize & Depth - 11/15/22inch - 6-14ft
- Brand - Nokta Makro
- Search system - 3D Image / ID /Sound
- Working Frequency - 5/14/20Khz
- 3 Non-Motion (Basic/Expert/Ground Anomaly & Cavity) and 3 Motion (All Metal/Fast/Deep)

DISCOVER MORE: OUR EXTENSIVE RANGE OF ADDITIONAL OFFERINGS



Traffic Tools

- Safety signs, cones, barriers and speed bumps
- Made In India
- For traffic/Car park management keeping drivers and pedestrians safe
- Available on Demand Purchase



UVM Trolley

- Vehicle telescoping inspection mirror
- Attachment - With LED Torch Light
- Mirror - PMMA acrylic mirror (high-strength shatterproof)
- Extendible Rod with Movable Tyers
- Length of Rod : 1.3 m
- Made In India
- Magnification Effect - 2X



Long Range Searchlight

- LED Search Light
- Model - 5W & 10W
- Range - 500m & 800m
- Inbuilt Battery & Charger
- 3 Intensity Modes
- Working Operation - 10Hrs
- Charging Time - 5Hrs



Body Worn Camera

- High Definition Recording
- Brand - Hikvision/OEM
- Audio & Video Footage
- Wide-Angle Lens
- Communication - 4G/Bluetooth
- Secure Data Storage
- Tamper Proof
- Inbuilt GPS



Guard Monitoring

- Used For Managing, tracking Guard
- Free Management Software Vibration +
- LED flash prompt working status
- Reading Mode - RFID 125KHz Reading
- distance : 3cm - 5cm 3.7V/880mAh
- rechargeable lithium batter
-



EAS Theft Alarm

- Electronic Article Surveillance
- widely used in retail and commercial environments to prevent theft and unauthorized removal of merchandise
- System Include RFID Tag and Detection Door
- Frequency: 8.2Mhz



Emergency Signages

- Quickly guiding you to the nearest exit or Emergency Protocol
- Made Type - Photoluminescent & LED
- Power - AC/DC/Battery Operated
- Easy to Install
- All Emergency Signages



Audio Door Phones

- Two-Way Speaking system
- Door lock release function
- Brand - ComMax/Yashicom/OEM
- Talking/unlocking/calling functions
- Easy Installation
- Power - DC12V



Digital Biometric Safes

- Customizable Safes
- Automatic Knob Locking
- Widely Available in Keypads/Fingerprints/Card Combination
- Admin-Master-User Codes
- Types - Car Safes/Hidden Home Safe/Hotel Safes



Video Conferencing

- Real-Time Virtual Communication
- Brand - OEM/Trueview/Peoplelink
- 360 Auto Webcam
- Smart Interactive Board Panel
- Wireless Speaker Phone with Microphone (Listen & Speak)
- Multi-Participant Meetings
- Easy to Use and Install

When You Thought You Had Enough Choices... Here's More!

OUR COMMITMENT CONTINUES...

As we wrap up this catalog, we want to thank you sincerely for choosing us as your trusted security partner. Security, to us, isn't just about products; it's a commitment we uphold every day.

We extend our heartfelt appreciation to our clients, dealers, partners, and our dedicated team. Your unwavering support has helped us become Rajasthan's foremost Safety & Security establishment. Your trust and collaboration have been crucial to our success. Thank you for being a part of our journey.

WALL OF ACHIEVEMENTS




YOUR SAFETY, OUR PRIORITY. YOUR SUCCESS, OUR REWARD.

COMPLETED PROJECTS



 222 & 319 NAVJEEVAN COMPLEX, SINDHI CAMP -
STATION RD, JAIPUR , RAJASTHAN 302006

 sales.sscommunications@gmail.com

 +0141 - 4016082  +91 - 7232888433

 +91 - 7627098663  +91 - 9829015613



SCAN TO CONNECT

